

Warner Theater

Washington DC

Production Stage Plan and Section - Not For Construction -

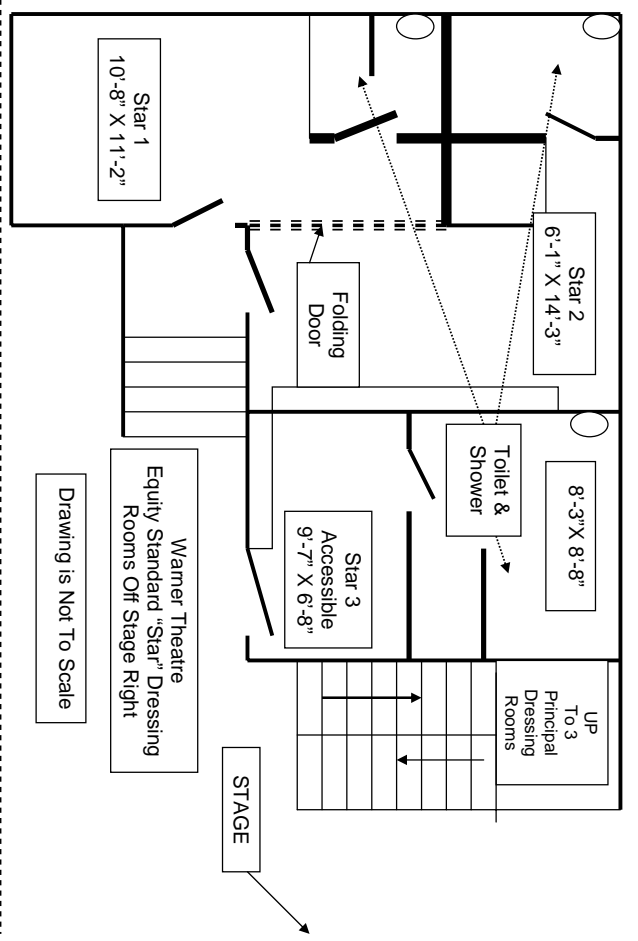
Schedule of Drawings

A1 Stage Plan
A2 Section

Scale: 1/4" = 1 Foot

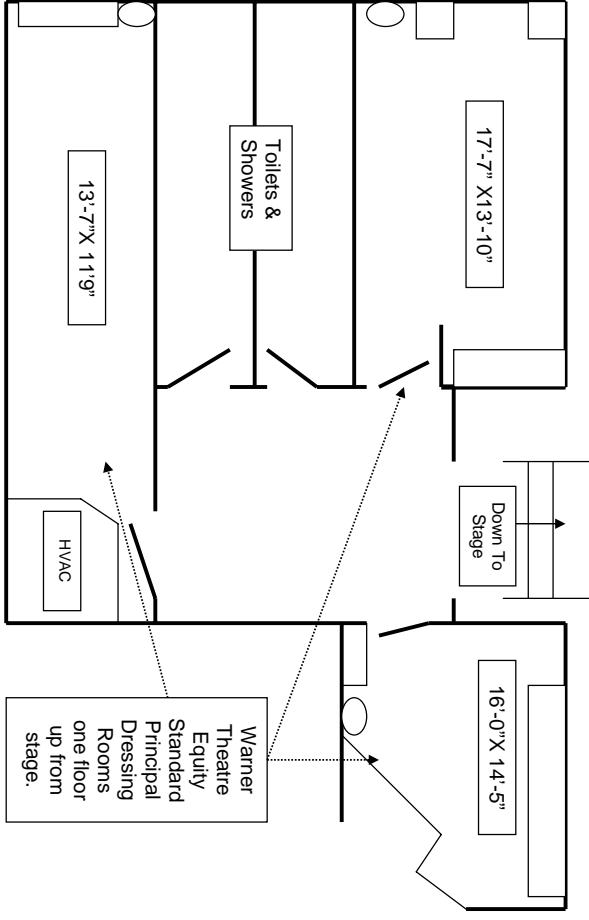
A1

12-22-01

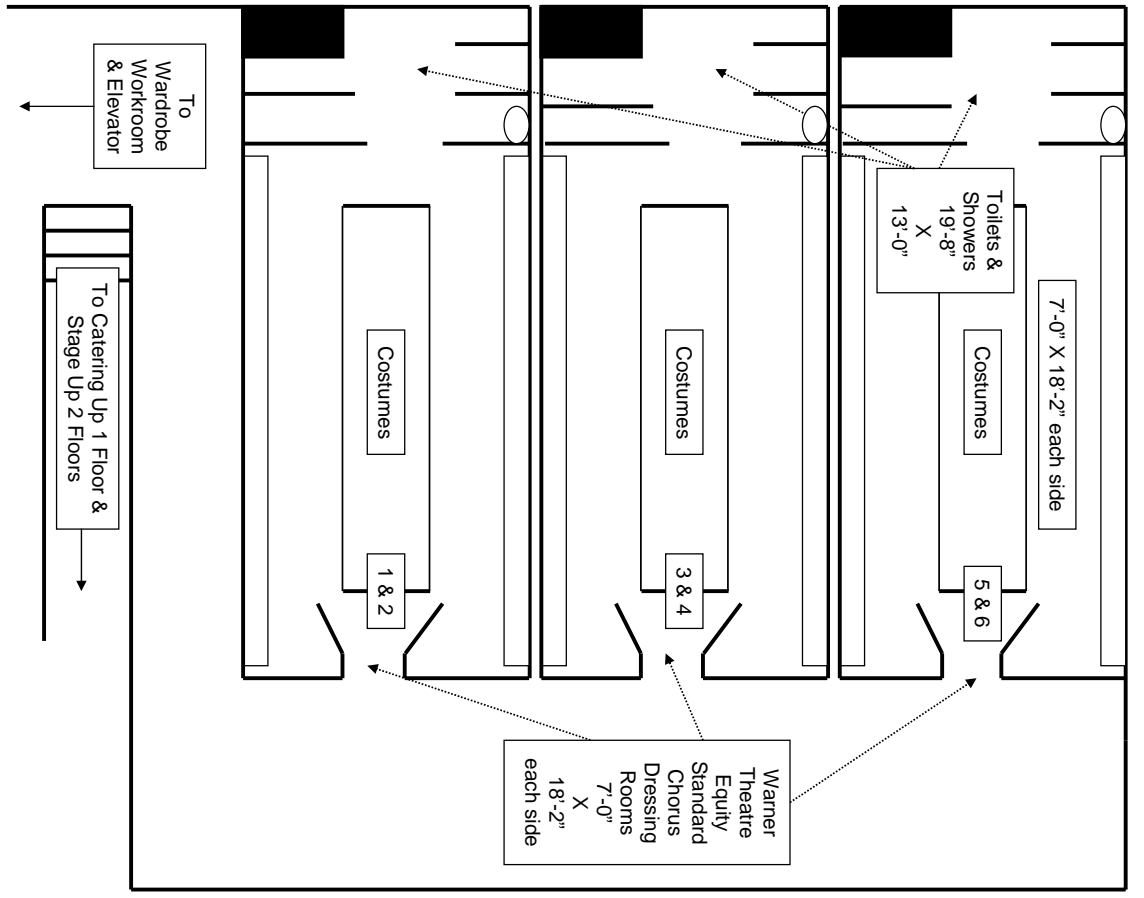


Warner Theatre
Equity Standard "Star" Dressing
Rooms Off Stage Right

Drawing is Not To Scale



Warner Theatre
Equity Standard
Principal Dressing
Rooms
one floor
up from
stage.

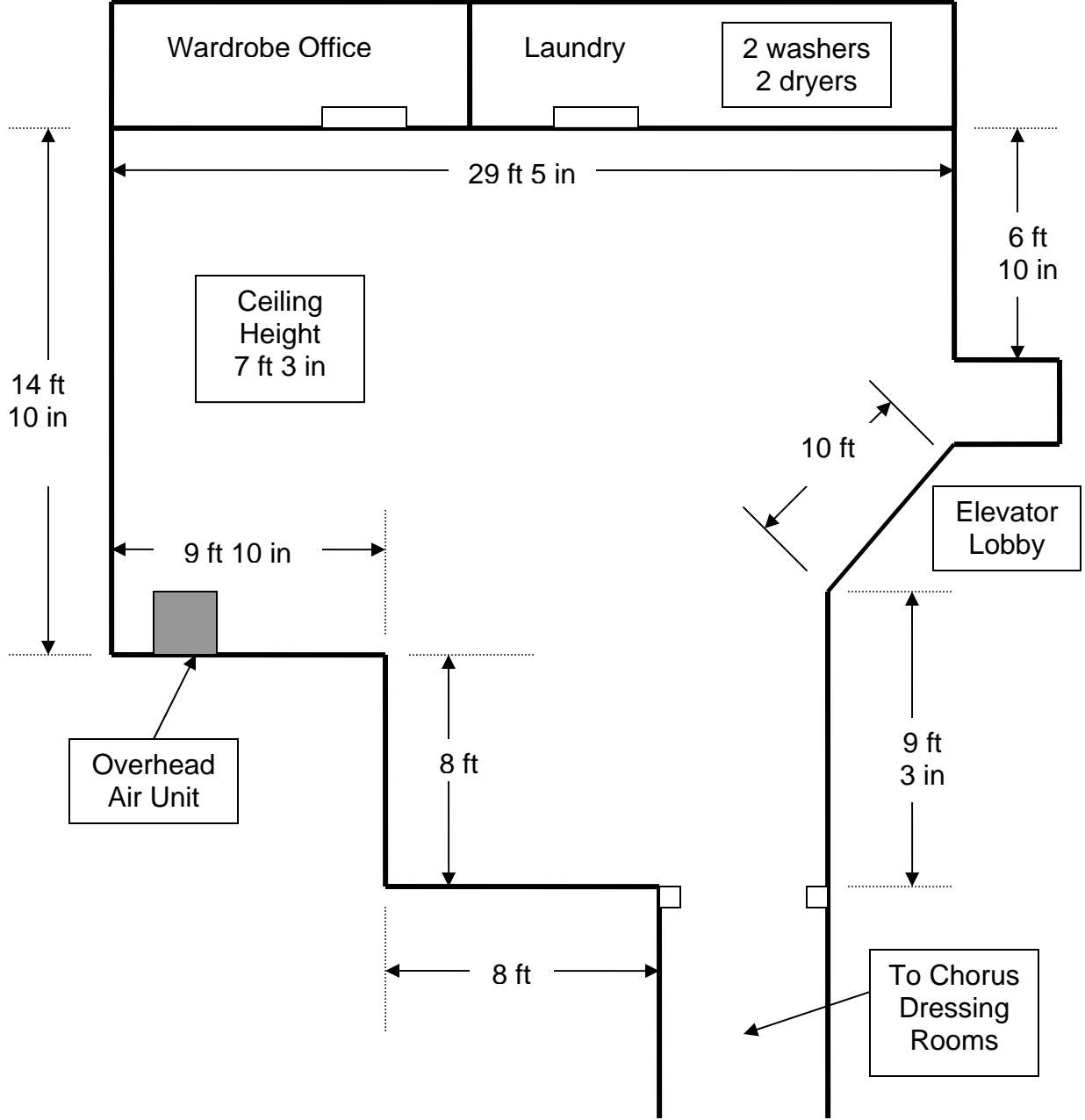


Warner Theatre
Equity Standard
Chorus Dressing
Rooms
7'-0"
X
18'-2"
each side

To Catering Up 1 Floor &
Stage Up 2 Floors

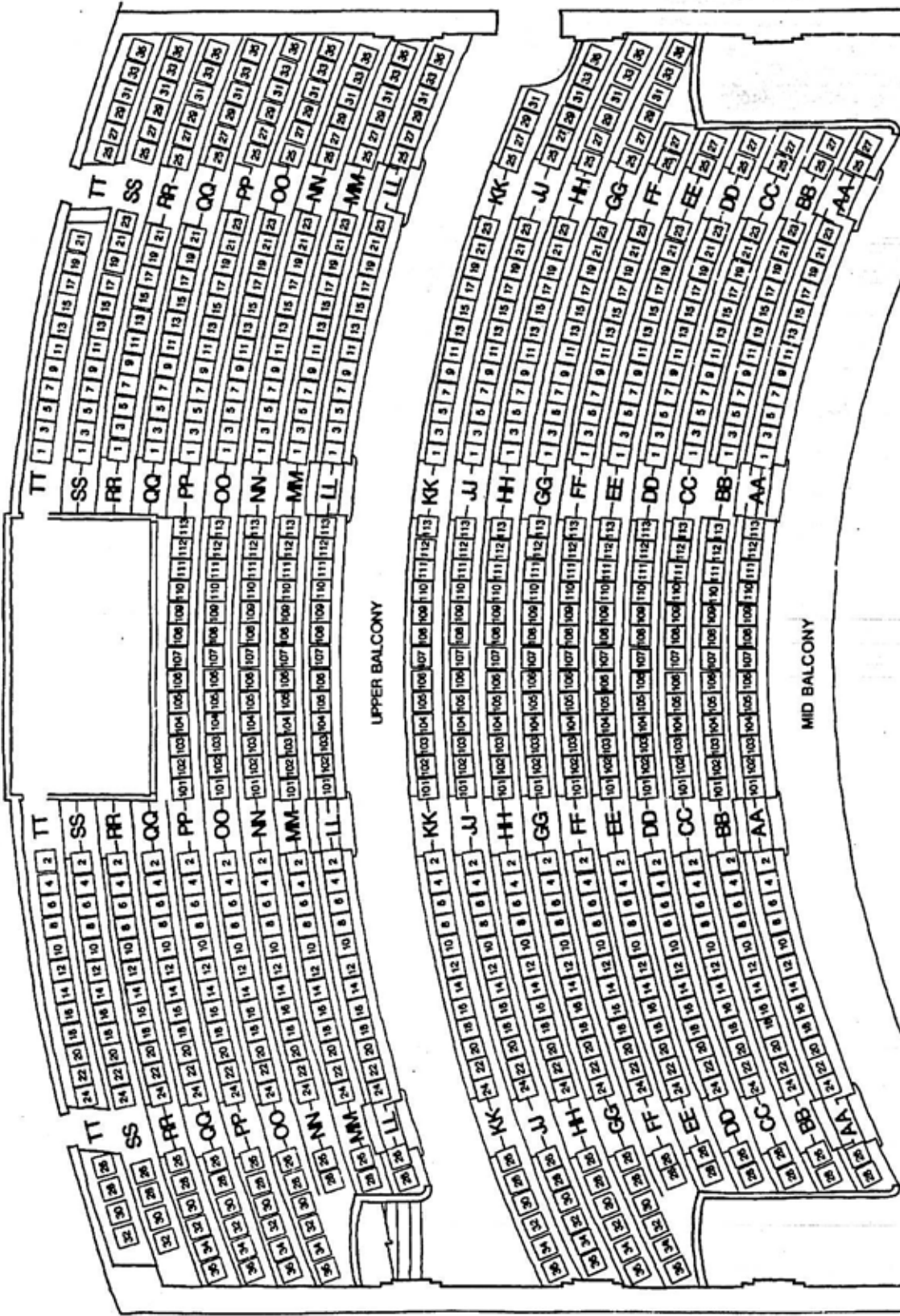
To
Wardrobe
Workroom
& Elevator

Warner Theatre Washington DC
 Wardrobe Work Room
 NOT TO SCALE



Elevator Access to Wardrobe, Green Room and Loading Dock
 3 ft. 9 in W X 6 ft 6 in L X 6 ft 11in H

Balcony Seating



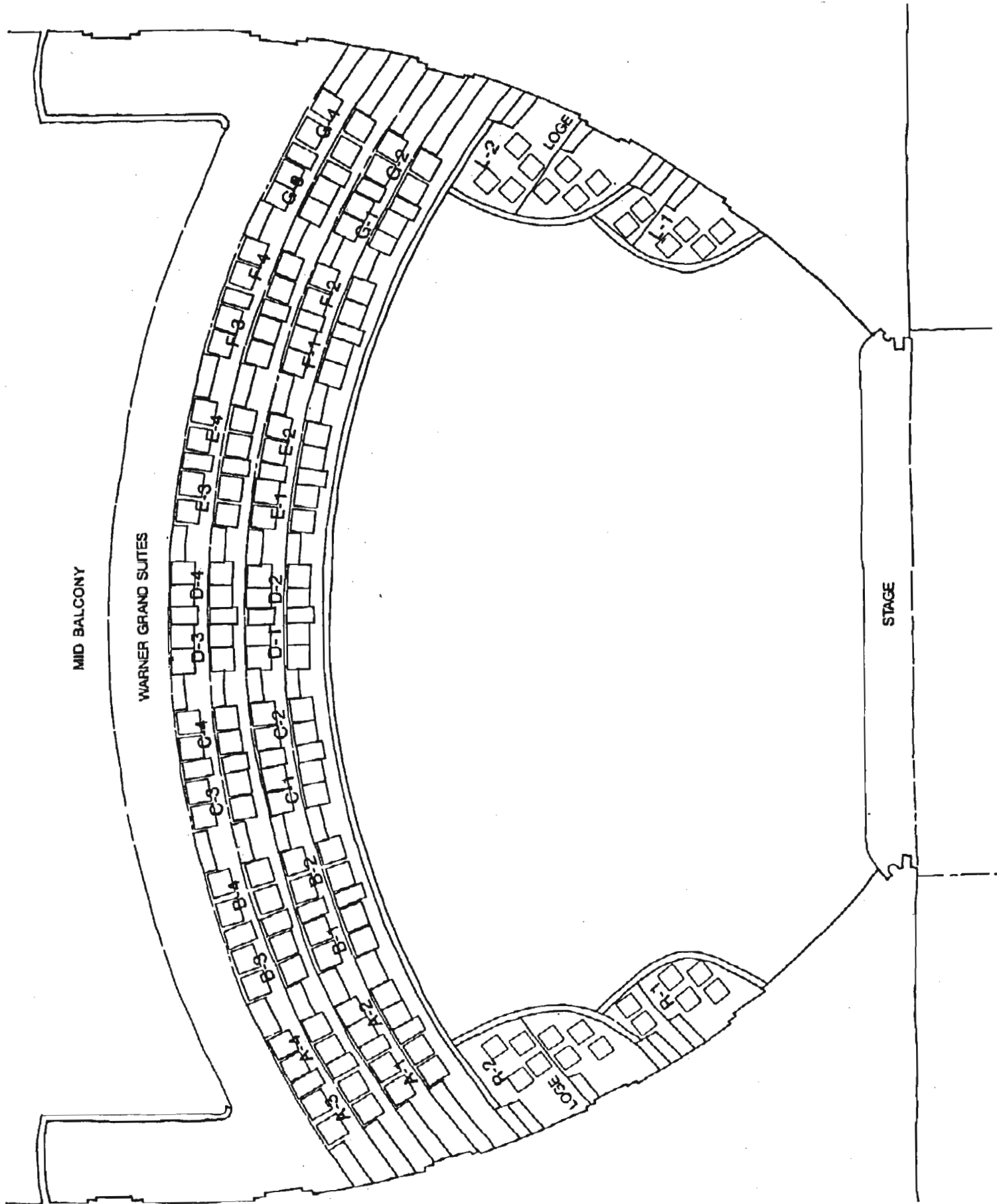
UPPER BALCONY

MID BALCONY

WARNER GRAND SUITES

MID BALCONY

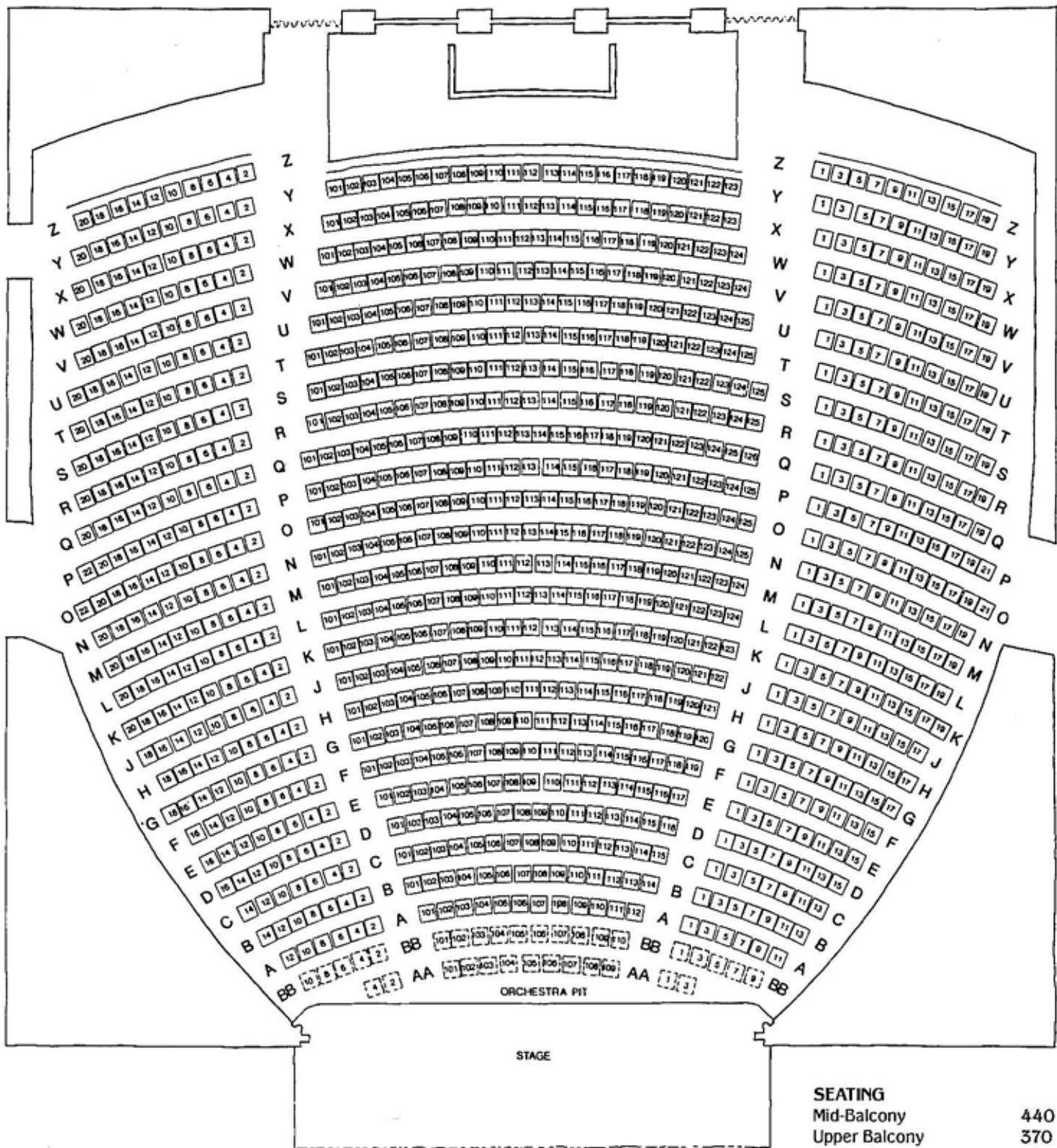
WARNER GRAND SUITES



STAGE

Orchestra Level Seating

LOBBY



SEATING	
Mid-Balcony	440
Upper Balcony	370
Orchestra	1004
Orchestra Pit	33
HOUSE TOTAL	1847